

# IMTEC ROOF DOOR SYSTEM



**BTA IMTEC**  
FLEXISEAL Access Doors

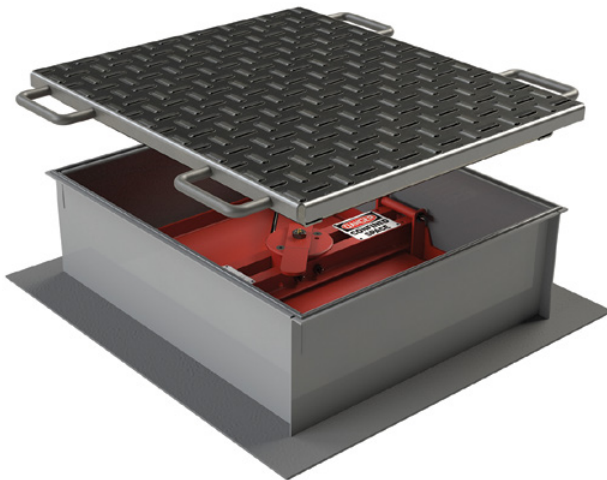
A BABCOCK POWER INC. SUBSIDIARY

## OVERVIEW

Boiler Tube Company of America/Imtec has been manufacturing Access Doors for the power industry since 1984. We have over 20,000 units installed and have experience in all areas of the power plant from the boiler to the stack.

Imtec's roof doors are available in two different styles, with operating temperatures from 400 degrees to 1000 degrees.

The FLEXISEAL doors have one or more yokes with closing screws that act on center point(s) of the door. This flexes the door plate toward the interior and assures a tight seal with the gasket. When opening the door, special safety features in the latch and screw mechanism(s) will assure that the latch pin cannot be removed easily until the door plate with its gasket is safely retracted from the sealing surface on the frame plate, thereby revealing any dangerous internal pressure and also preventing damage to the gasket.



Imtec Roof Door System

## FEATURES/BENEFITS

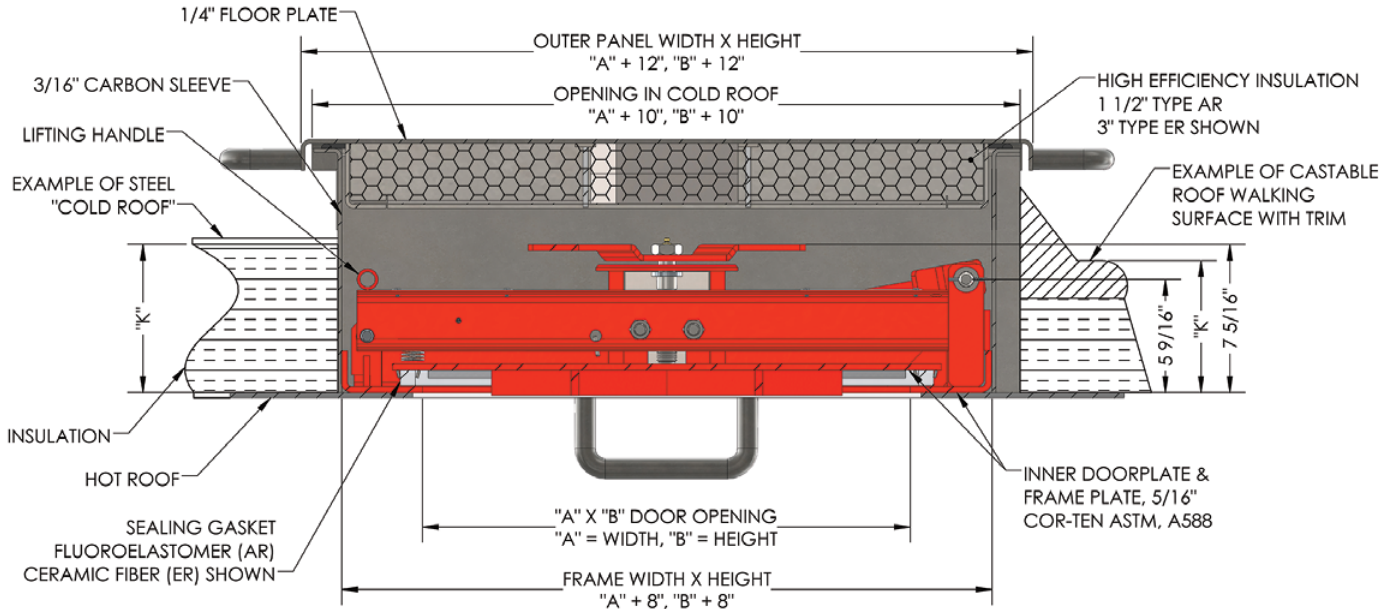
### Common

- Safety mechanism impedes release of the latch on a door with pressure
- Open & close in seconds without tools
- Adequate sizes for easy entry
- Safety latch prevents injury and entrapment
- Heavy, durable, dependable design
- Quick, easy installation - new or retrofit
- All stainless fasteners

### Special Features

- Heavy checkered plate outer panel




**DOOR TYPE ER & AR**

DOOR TYPE	AR	ER
Typical Applications	Insulated Roofs in Precipitators, Baghouses, and Flue Gas Ducts with Acid Corrosive Gases	Same as AR with Temperatures Above 400°F
Operating Temperature	400°F	1000°F
Max. Excursion	600-700°F	1100°F
Door Size Width x Height Of Door Opening	Code Numbers For Standard Sizes (Other Sizes Available)	
18" X 24"	AR-1824.X-1V+1.5R	ER-1824.X-1C+3M
18" X 30"	AR-1830.X-1V+1.5R	ER-1830.X-1C+3M
24" X 24"	AR-2424.X-1V+1.5R	ER-2424.X-1C+3M
24" X 30"	AR-2430.X-1V+1.5R	ER-2430.X-1C+3M
24" X 32"	AR-2432.X-1V+1.5R	ER-2432.X-1C+3M

For further information on Boiler Tube Company of America/Imtec's patented (US 5,158,043, US 4,574,973, US 4,685,586, US 6,412,221, US 7,389,610. Other patents pending) Roof Door System, please contact:

**Dennis Turner**

**Ph: 864-336-4424**

**Cell: 864-524-2009**

**Email: dennisturner@babcockpower.com**

**Tina Wilson**

**Ph: 864-485-0629**

**Cell: 508-723-4018**

**Email: twilson@babcockpower.com**

**SAFETY<sup>3</sup> PEOPLE. POWER. PROJECTS.**

We're giving safety the third degree.

Babcock Power Inc. and its subsidiaries place the safety, health and security of our people at the core of our company values. Our team is our most valuable resource, generating solutions everyday to deliver safe, clean, reliable energy globally. With a keen focus on safety, Babcock Power Inc. conducts business in a manner that protects our people, our customers and the environment. From innovation to generation, we are proud of our award-winning safety record and are committed to operating with integrity and excellence.

The data contained herein is solely for your information and is not offered, or to be construed, as a warranty or contractual responsibility.

© Boiler Tube Company of America, 2020