

IMTEC BOILER DOOR WITH TUBE PANEL

OVERVIEW

Boiler Tube Company of America/Imtec has been manufacturing Access Doors for the power industry since 1984. We have over 20,000 units installed and have experience in all areas of the power plant from the boiler to the stack.

Imtec's boiler doors with matching tube panels are available with a max operating temperatures of 2800 degrees. The boiler door must withstand high operating and excursion gas temperatures. Therefore, on boiler doors type BC the inner side of the door plate is equipped with high efficiency insulation supported by interior shelves and all contained in a protective Insulation pan which is protected by a 2" layer of castable refractory. For

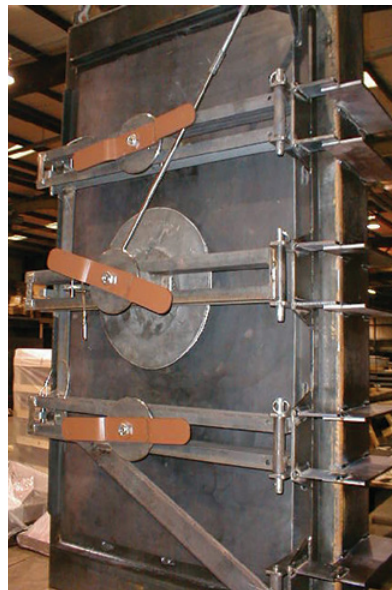
continued



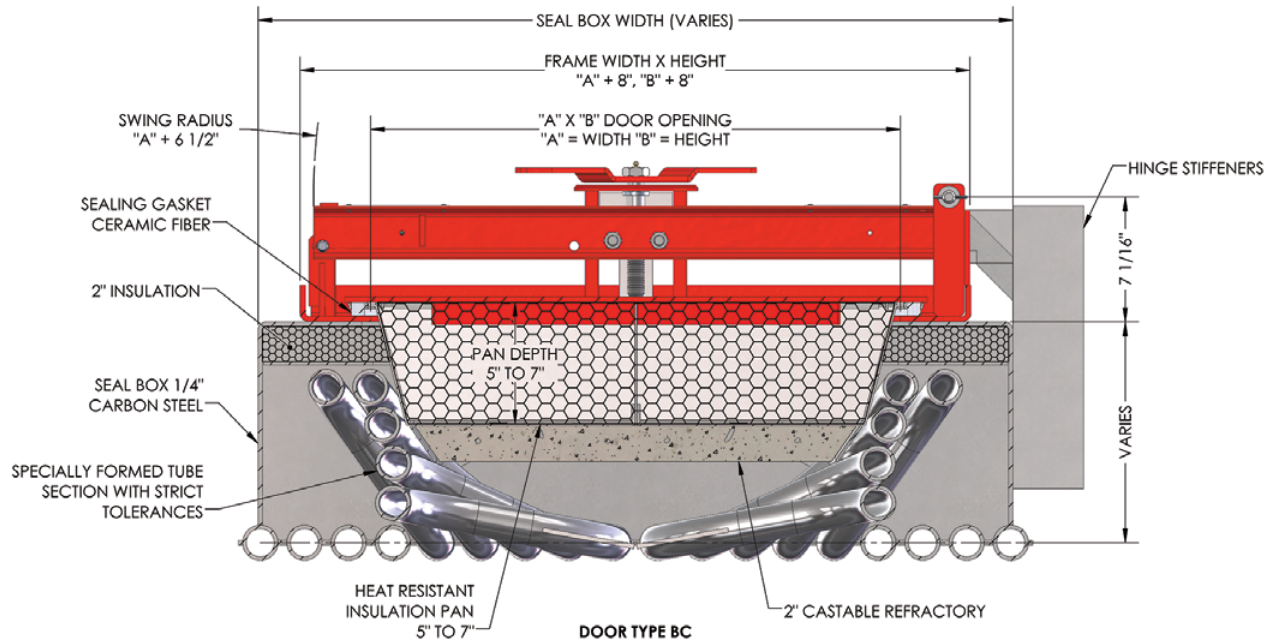
FEATURES/ BENEFITS

Common

- Safety mechanism impedes release of the latch on a door with pressure
- Open & close in seconds without tools
- Adequate sizes for easy entry
- Safety latch prevents injury and entrapment
- Heavy, durable, dependable design
- Quick, easy installation- new or retrofit
- All stainless fasteners
- Tube panel required
- Does not require forced cooling by air or water



Imtec Boiler Door with Tube Panel



flexibility and heat expandability the pan is made with slots and in movable sections from heat resistant steel. When installed, this insulation pan must be closely surrounded by water wall tubes shaped in a fashion to match the conical shape of the insulation pan.

The FLEXISEAL doors have one or more yokes with closing screws that act on center point(s) of the door. This flexes the door plate toward the interior and assures a tight seal with the gasket. When opening the door, special safety features in the latch and screw mechanism(s) will assure that the latch pin cannot be removed easily until the door plate with its gasket is safely retracted from the sealing surface on the frame plate, thereby revealing any dangerous internal pressure and also preventing damage to the gasket.

For further information on Boiler Tube Company of America/Imtec's patented (US 5,158,043, US 4,574,973, US 4,685,586, US 6,412,221, US 7,389,610, with other patents pending) Boiler Door with Tube Panel, please contact:

Dennis Turner

Ph: 864-336-4424

Cell: 864-524-2009

Email: dennisturner@babcockpower.com

Tina Wilson

Ph: 864-485-0629

Cell: 508-723-4018

Email: twilson@babcockpower.com

SAFETY³ PEOPLE. POWER. PROJECTS.

We're giving safety the third degree.

Babcock Power Inc. and its subsidiaries place the safety, health and security of our people at the core of our company values. Our team is our most valuable resource, generating solutions everyday to deliver safe, clean, reliable energy globally. With a keen focus on safety, Babcock Power Inc. conducts business in a manner that protects our people, our customers and the environment. From innovation to generation, we are proud of our award-winning safety record and are committed to operating with integrity and excellence.

The data contained herein is solely for your information and is not offered, or to be construed, as a warranty or contractual responsibility.

© Boiler Tube Company of America, 2020